



Joining the Dots

*A National Perspective on Primary Care Information
and Quality in NZ*

Presentation for World Health Care Networks Conference
July 2010

Andrew.Terris@patientsfirst.org.nz

Jointly sponsored by:

GENERAL
PRACTICE NZ
The Heart of Health Care Networks



The Royal New Zealand
College of General Practitioners

Coverage

- History
- Fit with National Groups and national IT Plan
- Programme Scope
- Current initiatives
- Market scan and emerging trends
- Identified future focus areas
- A framework for enabling quality through information

Matariki



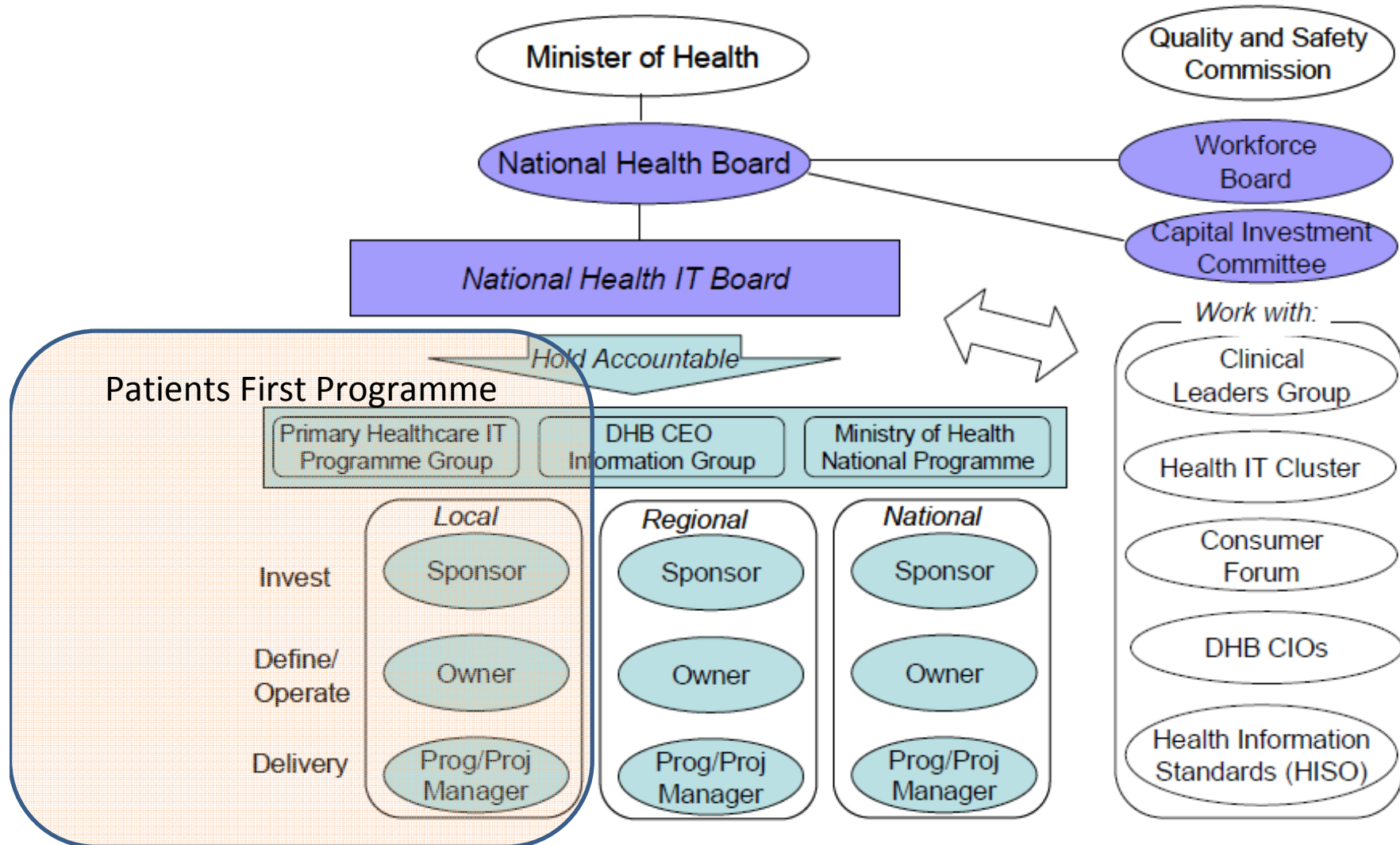
Matariki

- By other names – Pleiades, Subaru...
- *We're all looking at the same constellation from different perspectives*
- *In local Maori folklore – Matariki is also synonymous with the New Year – remembering the dead and celebrating new life*
- *It is a cluster of stars – how do we join them up?*

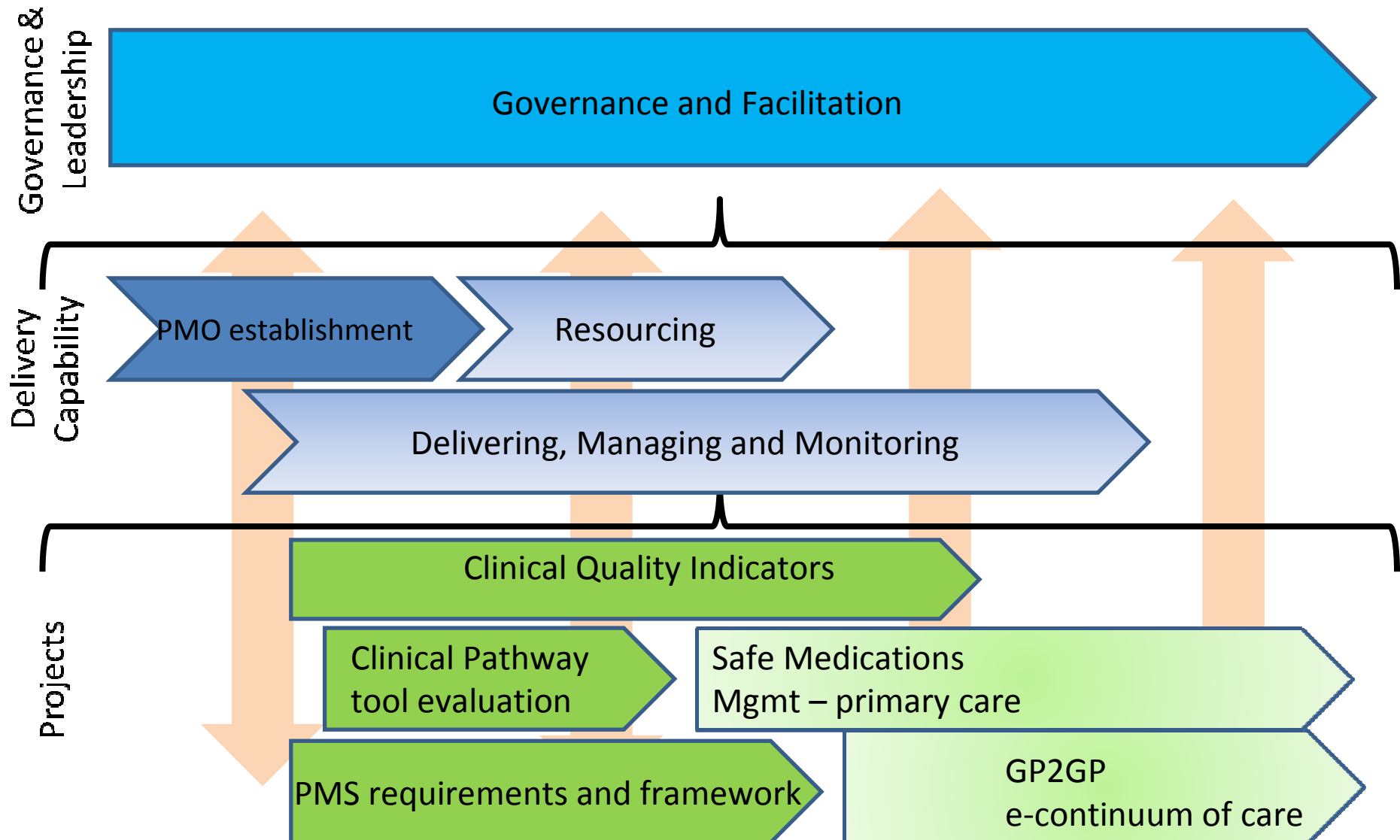
History

- Study tour 2007 – QoF
- CQI and systems – separate projects
- MRG report 2009 and NHITB funding 2010
- qi4gp re-branded Patients First to move to a more primary care focus (co-sponsored RNZCGP and GPNZ)
- Primary Care scope initially General Practice and Pharmacy for phase 1
- A programme of projects combining information and quality relating to Primary Care

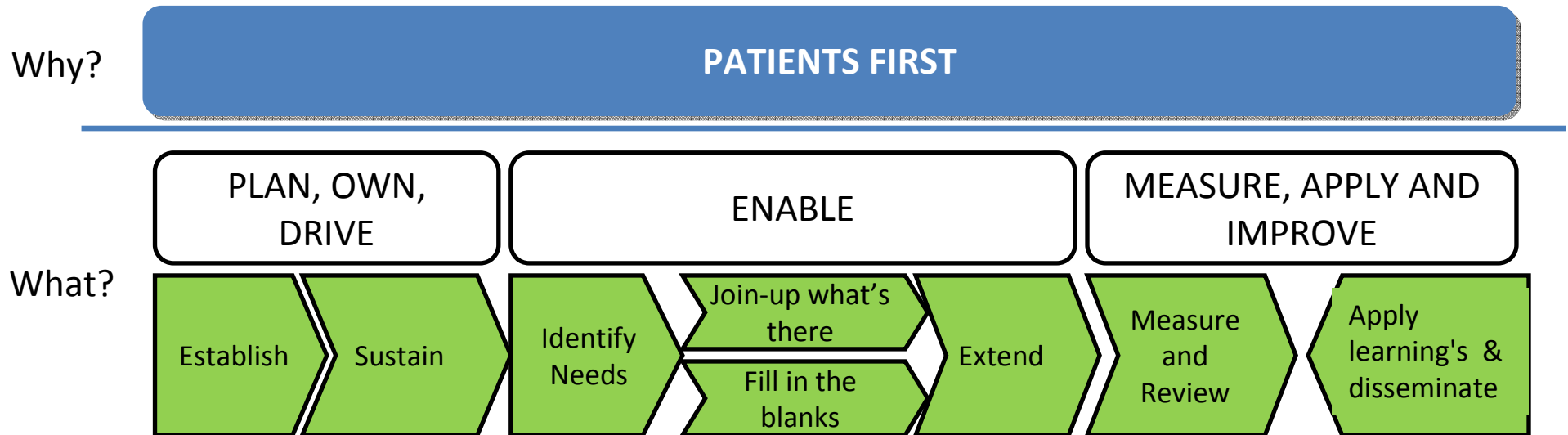
National Health IT Plan



Patients First Programme Scope



Framework



Current Patients First Initiatives

- Leadership
- PMS Requirements
- National Clinical Pathway Tool Evaluation
- Safe Medication Management – Primary Care
- GP2GP
- Clinical Quality Indicators

PMS Requirements - Scope

- Requirements framework for PMS products
 - “Traditional”/functional requirements
 - Requirements for addressing the new models of care as outlined in the BSMC business cases
 - Prioritisation roadmap for development
 - Framework for product certification
- Findings to date
 - Many requirements “taken as read”
 - Pull out the important/differentiators
 - API/Web Service for querying data
 - Privacy
 - EHR linkages

National Clinical Pathway tool Evaluation

“a method of defining a set of steps, regardless of care setting, that best describe a patient journey through the healthcare system to best use the available multi-disciplinary resource and application of best evidence base to aid in decisions at each point of intervention.”

- Evaluating available Clinical Pathway Tools that could be applied across multiple care settings and care providers in New Zealand.
- Determining the initial feasibility of adopting a Clinical Pathway Tool in New Zealand, including a high level consideration of implementation, costs, benefits, risks, etc.
- Recommending next steps based on the results of the Feasibility Study.
- Options along a continuum – grass roots v international

Safe Medications Mgmt – Primary care

- Evaluation framework
- Minimum medications data requirements (primary care view)
- Patient Banner content
- Medicine reconciliation pilot (GP – Rest Home)
- ePrescribing pilot – aged care, community pharmacy

GP2GP

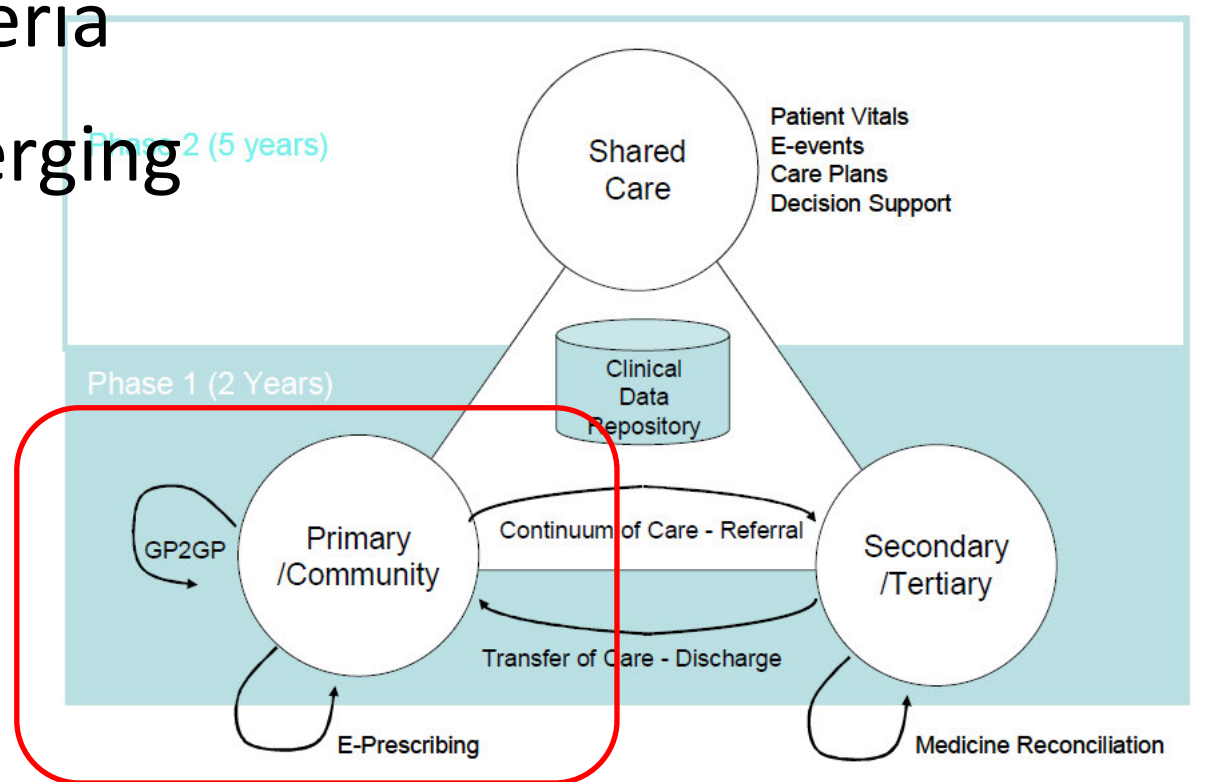
- Codified transfer of patient data between practices (and systems)
- Q4 2010
- Will be leveraged (along with eForms standard and others) toward an interoperability dataset
- Then move on to eContinuum of care (discharge, transfer)

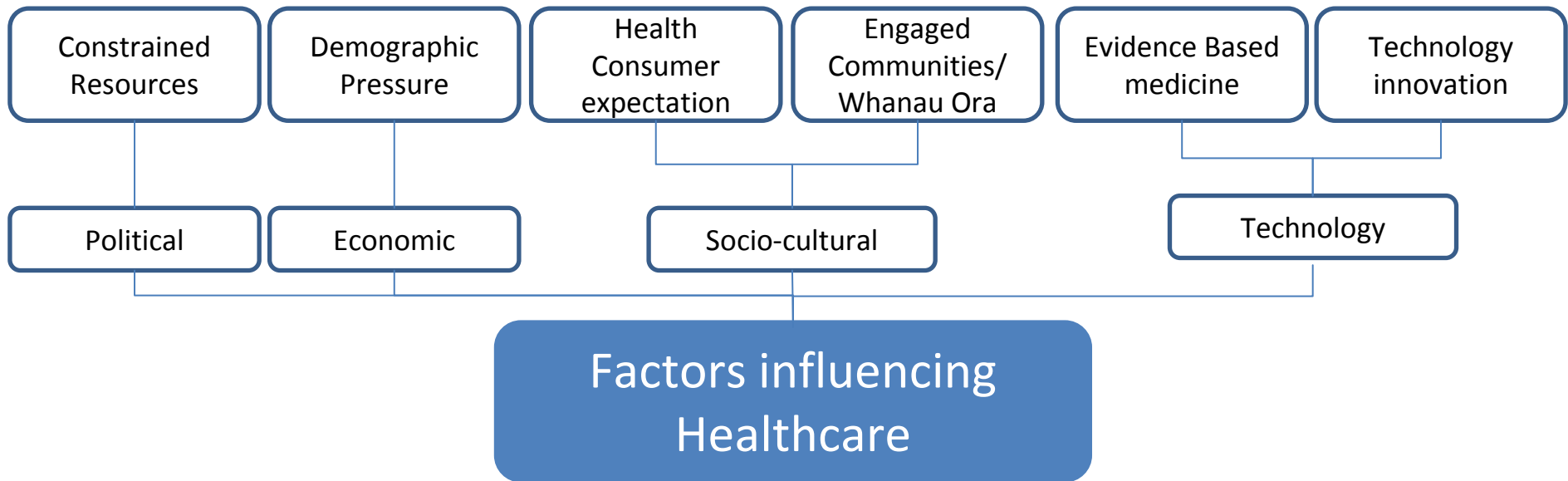
Clinical Quality Indicators - Scope

- Applying the science of RNZCGP/WSoM Clinical Quality Indicators
- Working with DHBNZ and RNZCGP regarding a consolidated library of clinical indicators
- Identifying requirements for vendors

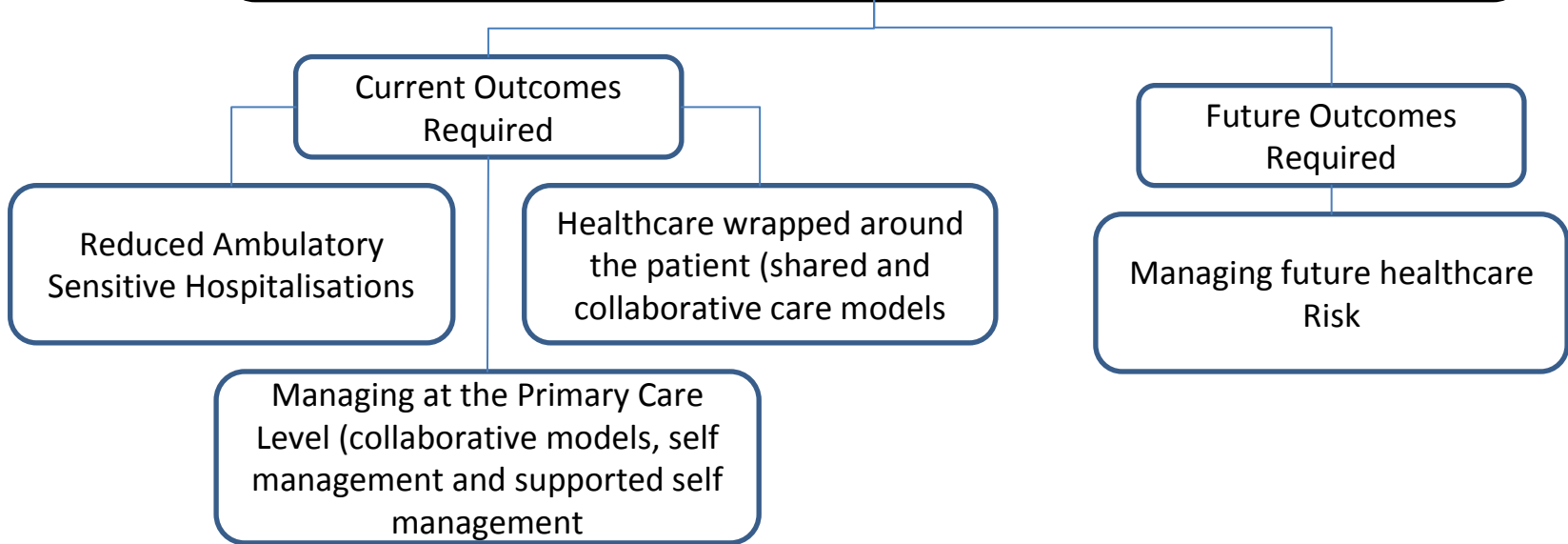
Leadership Scope

- Strategy
- Prioritisation Criteria
- Market Scan/emerging trends
- Identification of projects
- Governance

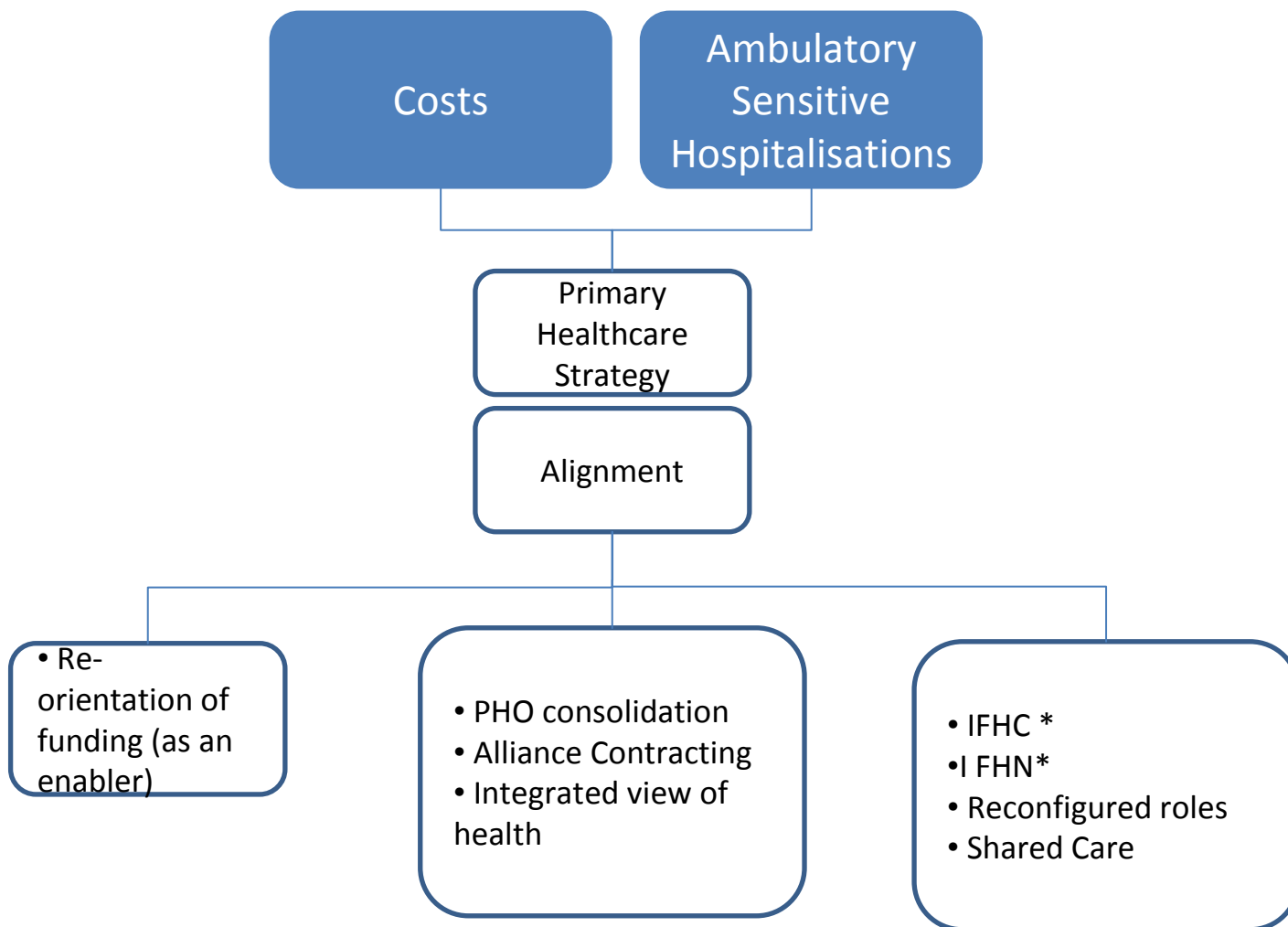




Achieving the best health system for New Zealanders



Primary Sector Response



IFHC = Integrated Family Health Centre

IFHN = Integrated Family Health Network

Emerging Information Trends

- Document management
- Web presence
- Teleconferencing
- Regional data warehousing & reporting
- PMS system data consolidation
- Reach-in (1 -> 2), Reach-out (2 -> 1)
- Virtualisation and consolidation of infrastructure
- Joined-up eco-system
- Aligning workforce, IT and Capital resources
- Shared Care
- Privacy and patient identifiable information

Spotlight on (Composite) Success

Some examples

Canterbury Initiative – Integrated Care models

Compass (Wellington) – IP Videoconferencing,
Paramedic outreach services

Rotorua – cloud based PMS, Post Mortem Diversion

...and many others...

Identified Initiatives

Lead

- Information to support quality outcomes
 - Integrated Indicator Library
 - Clinical Coding Quality (data fit for sharing)
 - Evaluation of Toolset for reporting
- Significant Events Summary
- eContinuum of care (e-discharge/e-referral)
- Predictive Risk Assessment
- Innovation award

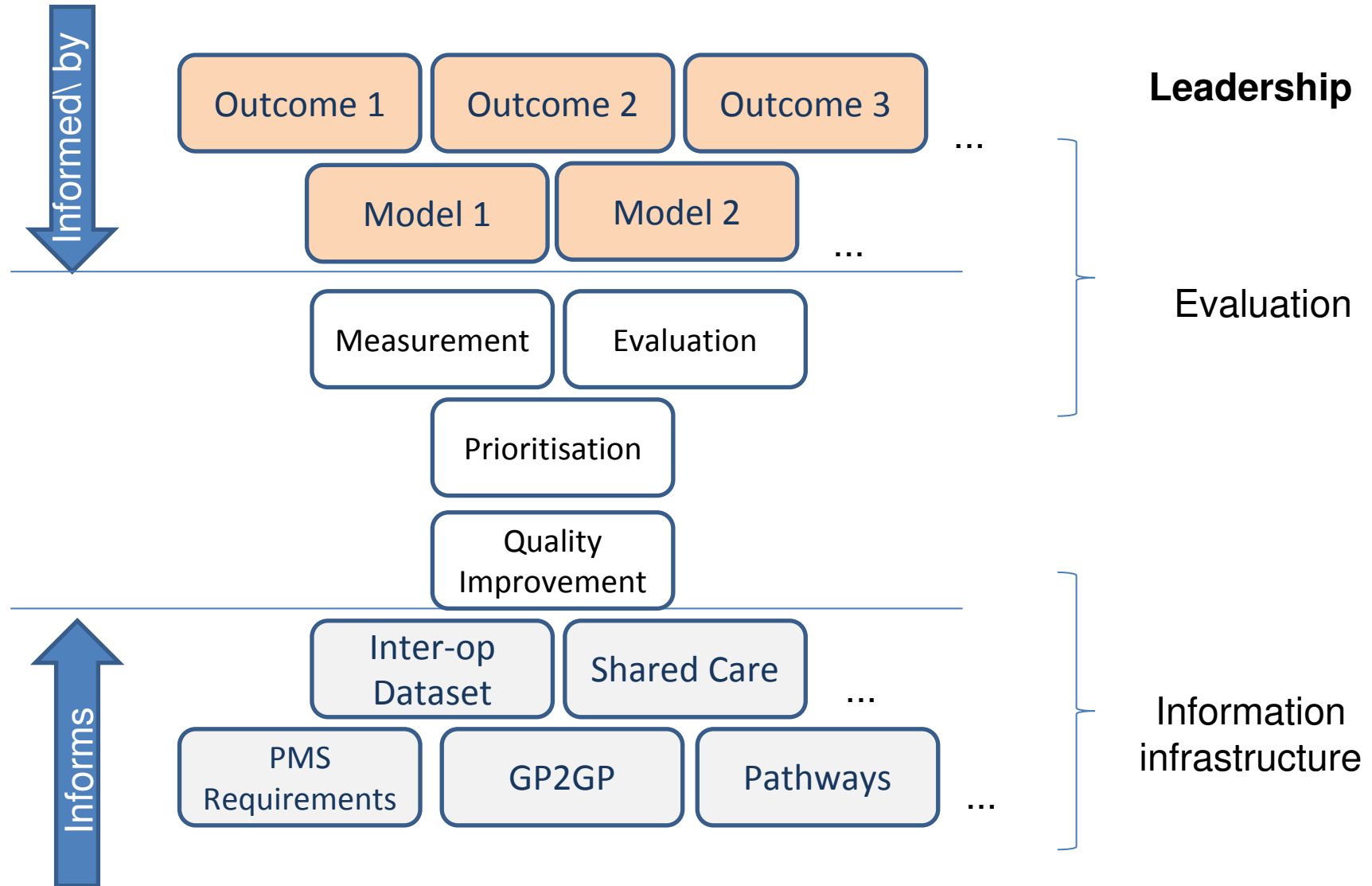
Be part Of

- Inter-operability Dataset
- ePharmacy
- Pathway Tool and rollout template

Interested Party

- Primary and community Child health record
- Manage My Health implementation
- Whanau Ora framework

Patients First Framework



The patient is really the star



Anything done in health care that does not help a patient or family is, by definition, waste, whether or not the professions and their associations traditionally hallow it.

Don Berwick

For more information – refer to www.patientsfirst.org.nz

Questions?